

Re-glassing at Estrella AG

The precise solution to restore a new shine

When glass-lined equipment ages, corrosion, chipping or mechanical damage are common consequences. Instead of investing in costly new equipment, re-glassing offers a sustainable and cost-effective alternative – with uncompromising quality. With decades of experience, we handle the entire re-glassing process for you. **Fast, reliable and certified.**

Your benefits at a glance

- **Cost savings:** up to 40% cheaper than a new equipment
- **Time saving:** completed in 3 to 4 weeks
- **Quality guarantee:** technically equivalent to new installations
- **Sustainability:** conserves resources, environmentally friendly
- **Flexibility:** also suitable for equipment from other manufacturers

Our re-glassing process – step by step

1. Delivery and incoming inspection

- Upon arrival at our premises, your equipment undergoes a visual inspection, is documented and recorded in the system. Our quality assurance department analyses its condition, in particular by measuring wall thickness and classifying any damage.

Our acceptance protocol defines:

- Original manufacturer
- Nature and cause of damage
- Dimensional checks for weld deformation
- Weld quality
- Degree of corrosion of the jacket, etc.

2. Damage analysis and quotation

You will receive a transparent assessment along with our recommendation: repair, complete re-glassing or, if necessary, remanufacturing. On request, we can incorporate additional modifications such as new fittings or insulation structures.

3. Mechanical machining

After blasting, the corroded areas are ground, welded and reshaped. If required, new flanges or sealing surfaces are manufactured – custom made).

Before



During



After



4. Annealing and stress relief

To eliminate internal stress, the equipment is heat-treated under controlled conditions, and its surface is prepared for the application of the new glass lining.

5. Glass Lining

We apply our proprietary **Estrella 2000 enamel** using a thin-layer coating process: two primer coats, followed by four to five finishing coats. After each firing, the layer thickness is checked to ensure a flawless finish.

6. External coating and finish

As standard, we apply a 2K zinc dust-based primer to your unit. The colour and coating systems can be adapted to the customer's requirements. The external surface is also inspected, including an adhesion test and a measurement of the dry film thickness.

7. Final inspection and acceptance

We inspect the unit as if it were new equipment: high-voltage (dielectric) test at 20,000 volts, pressure test, dimensional inspection, CE conformity. Acceptance is carried out by an independent body such as the **Swiss Safety Center** or **TÜV Süd**.

8. Packaging and shipping

Careful packaging, secured for transport and all documents included. On request, we can organise the entire logistics process for you.

Documentation and quality

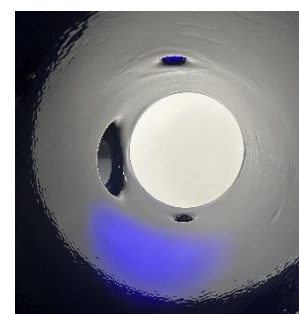
- Re-glassing report
- Glass lining test report
- Pressure test certificate
- Thickness measurement
- Compliance drawing
- External coating protocol
- New nameplates (with new glassing marking)



Before




After



Are you interested in re-glassing?

Whether it's a tank, a reactor, a column or accessories such as agitators, baffles, lids, manholes, protective rings, etc., we'd be happy to advise you on your specific requirements. Our team will quickly provide you with a firm quote, including a feasibility analysis and a delivery date.

 **Contact us by phone on +41 (0)61 726 4511 or email us at info@estrella.ch**